


VIDEO INSPECTION REPORT

PROJECT: Harris County WCID 99		AREA: 210 Bickett Lane		DATA MANAGEMENT INFORMATION			
				Disc Number	BIK-001	Report Date	10/29/2019
				Segment File No.	BIK001.2	TV Date	10/24/2019
				Report File No.	BIK001.2	TV Tech	TJ
				Project Operator	Eagle Water Mgmt.		
				Project Engineer			
Line Segment Information				LINE SEGMENT and PIPE INFORMATION			
Up Stream Manhole		Down Stream Manhole		Tv Distance	61.0	Pipe Type	Concrete
214		218		Pipe Diameter	10.0"	Line Number	
Actual Distance		61.0		Line Depth	6.50'	Easement	Street ROW
61.0		61.0		Estimated Connections	>100	Line Class	Main Line
UpStream Manhole Address: 214 Bickett		DownStream Manhole Address: 218 Bickett		TEST CONDITIONS			
				Inspection Format	Evaluation Survey-Sanitary Sewer		
Ups MH Type: PRE-CAST		Dwn MH Type: PRE-CAST		Camera Direction	Downstream	Line Status	Live, "in-service"
Condition: Average		Condition: Average		Dye Test	N/A	Dye Test Result	N/A

SIGNIFICANT IMAGES	STA.	STA.	🕒	Observations	Struc.	Obs.	Joint	Align.	I & I	Det.
	D	R			Tap	Def.	Def.			
	0.0		0	Start Survey, MH 214	0	0	0	0	0	0
	0.0		7	Set Camera Footage						
	12.0		12	Joint Defect-Gasket				2		2
	22.1		12	Joint Defect-Gasket						
	29.8		12	Transition to ABS Joint Offset-Slight						
	61.0		12	End Survey, MH 218 ***Complete Inspection***						

11.9 Station Defect
Joint Defect-Gasket
Deterioration

SIGNIFICANT IMAGES

STA. STA.
D R



Observations

Struc. Obs. Joint
Tap Def. Def. Def. Align. I & I Det.



29.8 Station Defect

Transition from concrete to ABS
Joint Offset-Slight

Station Defect

SIGNIFICANT IMAGES

STA. STA.
D R



Observations

Struc. Obs. Joint
Tap Def. Def. Def. Align. I & I Det.

STATION DEFECT

STATION DEFECT

SIGNIFICANT IMAGES

STA. STA.
D R



Observations

Struc. Obs. Joint
Tap Def. Def. Def. Align. I & I Det.

STATION DEFECT

STATION DEFECT

SIGNIFICANT IMAGES

STA. STA.
D R 

Observations

Struc. Obs. Joint
Tap Def. Def. Def. Align. I & I Det.

STATION DEFECT

<p>10 rated defect.....pipe failure, near term repair on a priority basis 3 rated defect.....scheduled repair or maintenance 2 rated defect.....pipe defect indicating future service issues 1 rated defect.....observation of interest</p> <p>Rating system is designed to profile this individual line segment in relation to other line segments in the test inventory. The larger the Line Rating Index Number, the more attention to repair and/or maintenance should be made.</p>								
	RATING SCORES:	0	0	0	2	0	0	2
	INDEX COEFFICIENT:	<input type="text" value="1.0"/>						
	LINE RATING INDEX:	<input type="text" value="0.8"/>						

INSPECTION COMMENTS:

SIGNIFICANT IMAGES

STA. STA.
D R



Observations

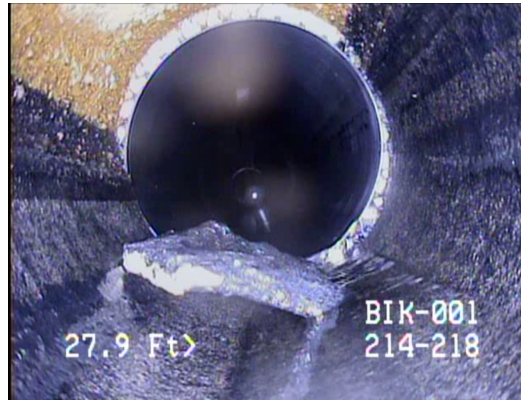
Struc. Obs. Joint
Tap Def. Def. Def. Align. I & I Det.



11.9 STATION DEFECT

Joint Defect-Gasket

Deterioration



29.8 STATION DEFECT

Transition from concrete to ABS
Joint Offset-Slight

STATION DEFECT

STATION DEFECT

STATION DEFECT

STATION DEFECT

SIGNIFICANT IMAGES

STA. STA.
D R



Observations

Struc. Obs. Joint
Tap Def. Def. Def. Align. I & I Det.

SIGNIFICANT IMAGES

STATION DEFECT

STATION DEFECT

STATION DEFECT

STATION DEFECT

STATION DEFECT

STATION DEFECT

SIGNIFICANT IMAGES

STA. STA.
D R



Observations

Struc. Obs. Joint
Tap Def. Def. Def. Align. I & I Det.