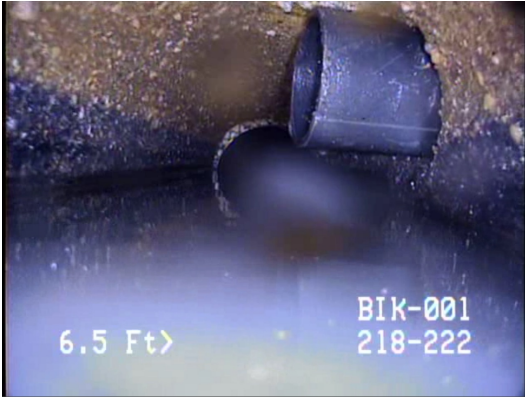


VIDEO INSPECTION REPORT

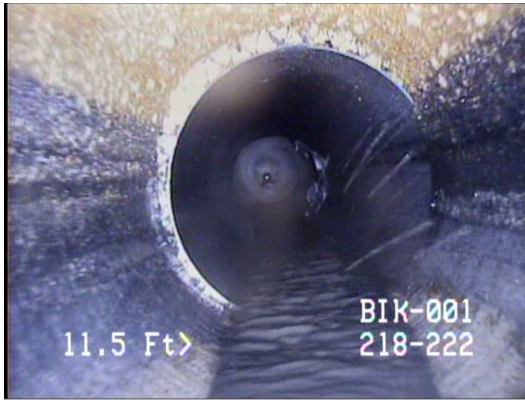
PROJECT: Harris County WCID 99		AREA: 210 Bickett Lane		DATA MANAGEMENT INFORMATION			
				Disc Number	BIK-001	Report Date	10/29/2019
				Segment File No.	BIK001.1 .mp4	TV Date	10/24/2019
				Report File No.	BIK001.1 .pdf	TV Tech	TJ
				Project Operator	Eagle Water Mgmt.		
				Project Engineer			
Line Segment Information				LINE SEGMENT and PIPE INFORMATION			
Up Stream Manhole		Down Stream Manhole		Tv Distance	57.0	Pipe Type	Concrete
218		222		Pipe Diameter	10.0"	Line Number	
Actual Distance		62.0		Line Depth	7.25'	Easement	Street ROW
UpStream Manhole Address:		DownStream Manhole Address:		Estimated Connections	>100	Line Class	Main Line
218 Bickett Lane		222 Bickett Lane		TEST CONDITIONS			
Ups MH Type		Dwn MH Type		Inspection Format	Evaluation Survey-Sanitary Sewer		
PRE-CAST		PRE-CAST		Camera Direction	Downstream	Line Status	Live, "in-service"
Condition		Condition		Dye Test	N/A	Dye Test Result	N/A
Average		Average					

SIGNIFICANT IMAGES	STA.	STA.	🕒	Observations	Tap	Struc. Def.	Obs. Def.	Joint Def.	Align.	I & I	Det.
	D	R									
	0.0		0	Start Survey, MH 218	0	0	0	0	0	0	0
	0.0		7	Set Camera Footage							
	8.3		2	Protruding Service, 25% to 50%	1	3	2				
	12.0		12	Transition to ABS							
	15.5		2	Factory Service, Unused	0						
	50.0		12	Transition to Concrete							
	57.0		12	Deterioration-Medium							

8.3 Station Defect
Protruding Service, 25% to 50%

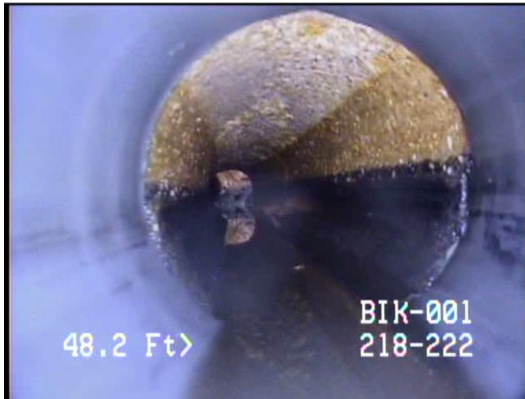
SIGNIFICANT IMAGES

STA. D	STA. R	🕒	Observations	Struc. Tap	Def.	Obs. Def.	Joint Def.	Align.	I & I	Det.
57.0		12	Debris-Fixed			2				
57.0		12	End Inspection Attempt- due to fixed debris ***Complete Inspection***							



12.0 Station Defect

Transition from concrete to ABS



50.0 Station Defect

Transition to Concrete

SIGNIFICANT IMAGES

STA. STA.
D R



Observations

Struc. Obs. Joint
Tap Def. Def. Def. Align. I & I Det.

STATION DEFECT

STATION DEFECT

SIGNIFICANT IMAGES

STA. STA.
D R



Observations

Struc. Obs. Joint
Tap Def. Def. Def. Align. I & I Det.

STATION DEFECT

STATION DEFECT

SIGNIFICANT IMAGES

STA. STA.
D R 

Observations

Struc. Obs. Joint
Tap Def. Def. Def. Align. I & I Det.

STATION DEFECT

<p>10 rated defect.....pipe failure, near term repair on a priority basis 3 rated defect.....scheduled repair or maintenance 2 rated defect.....pipe defect indicating future service issues 1 rated defect.....observation of interest</p> <p>Rating system is designed to profile this individual line segment in relation to other line segments in the test inventory. The larger the Line Rating Index Number, the more attention to repair and/or maintenance should be made.</p>								
		TAPS	STRUC. DEF	OBS. DEF	JT. DEF	ALIGN.	I&I	DET.
	RATING SCORES:	1	3	4	0	0	0	0
	INDEX COEFFICIENT:	<input type="text" value="1.0"/>						
	LINE RATING INDEX:	<input type="text" value="1.4"/>						

INSPECTION COMMENTS:

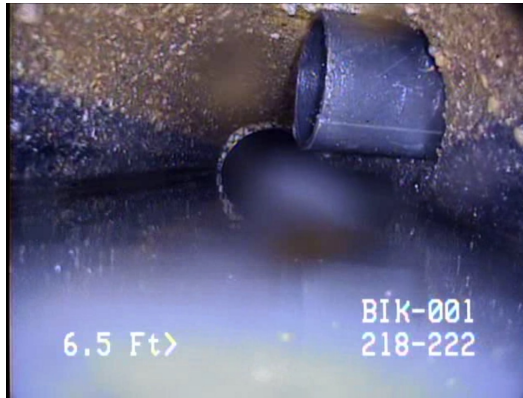
SIGNIFICANT IMAGES

STA. STA.
D R



Observations

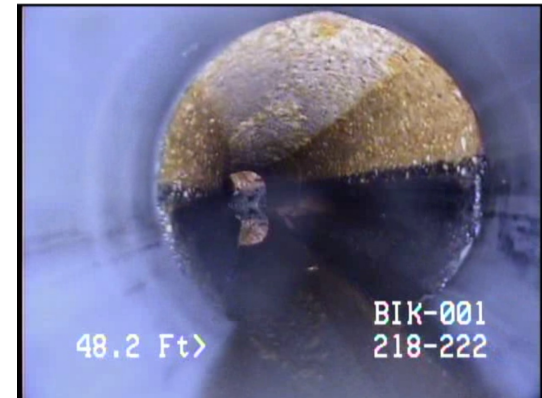
Struc. Obs. Joint
Tap Def. Def. Def. Align. I & I Det.



8.3 STATION DEFECT
Protruding Service, 25% to 50%



12.0 STATION DEFECT
Transition from concrete to ABS



50.0 STATION DEFECT
Transition to Concrete

STATION DEFECT

STATION DEFECT

STATION DEFECT

SIGNIFICANT IMAGES

STA. STA.
D R



Observations

Struc. Obs. Joint
Tap Def. Def. Def. Align. I & I Det.

SIGNIFICANT IMAGES

STATION DEFECT

STATION DEFECT

STATION DEFECT

STATION DEFECT

STATION DEFECT

STATION DEFECT

SIGNIFICANT IMAGES

STA. STA.
D R



Observations

Struc. Obs. Joint
Tap Def. Def. Def. Align. I & I Det.